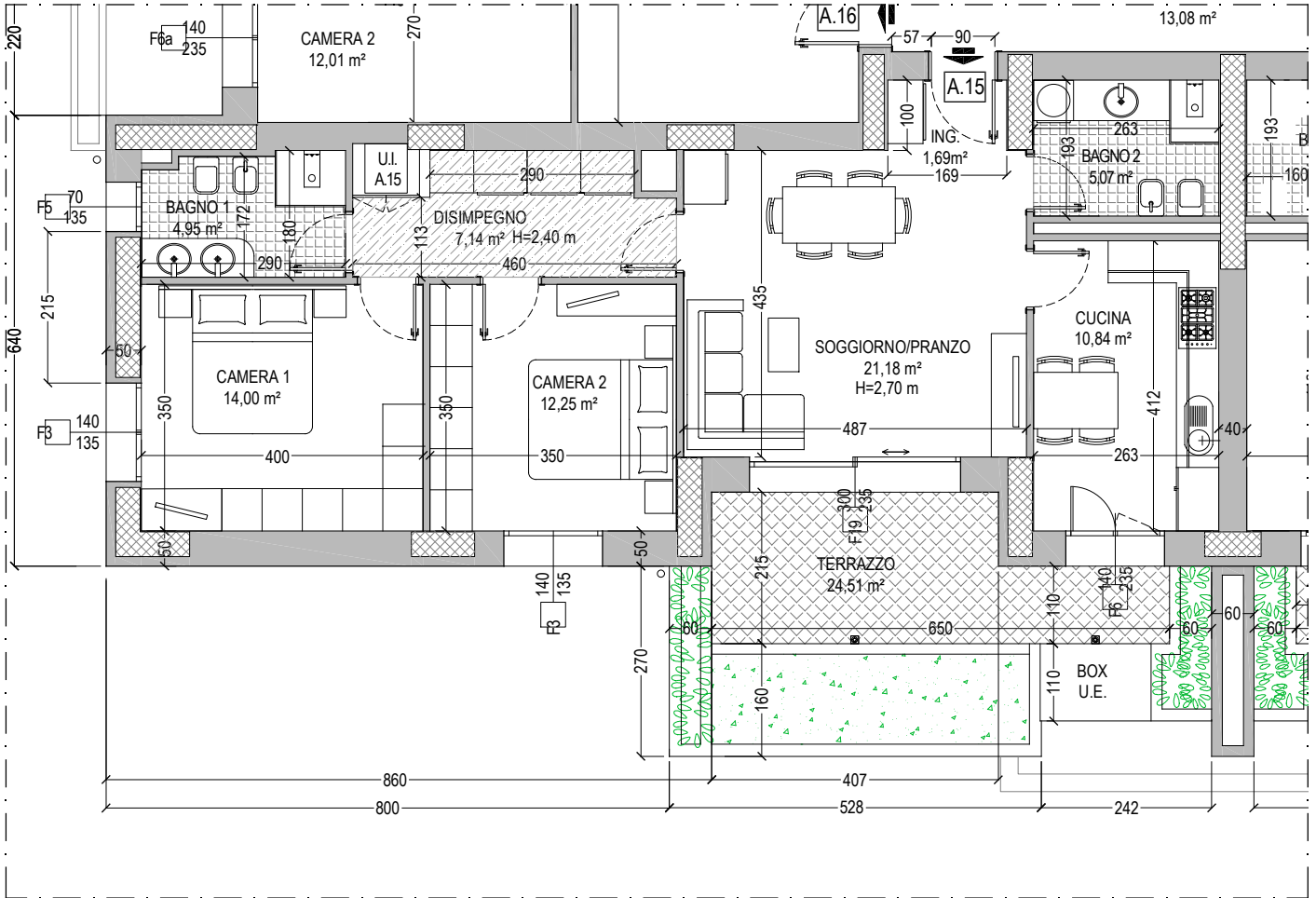


**INTERVENTO RESIDENZIALE**  
**RIALE NORD AR.s8 - Comparto C10.1 parte**  
**ZOLA PREDOSA - Via Allende n. 2**



APPARTAMENTO 98,95 x 100% = 98,95 mq  
 TERRAZZO 24,51 x 50% = 12,26 mq  
 SUPERFICIE LORDA COMMERCIALE TOTALE = 111,21 mq

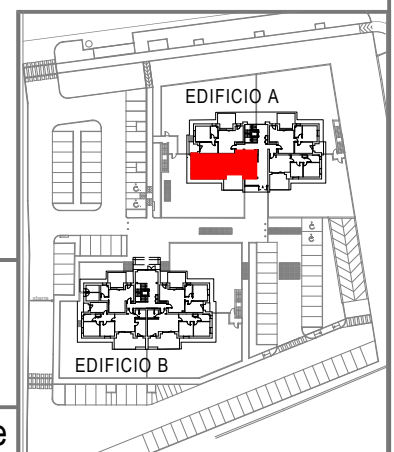
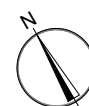


**EDIFICIO A**

**ALLOGGIO A.15**

**PIANO TERZO**

**Scala 1:100**



**NOTA: le misure sono indicative e possono subire variazioni in cantiere**