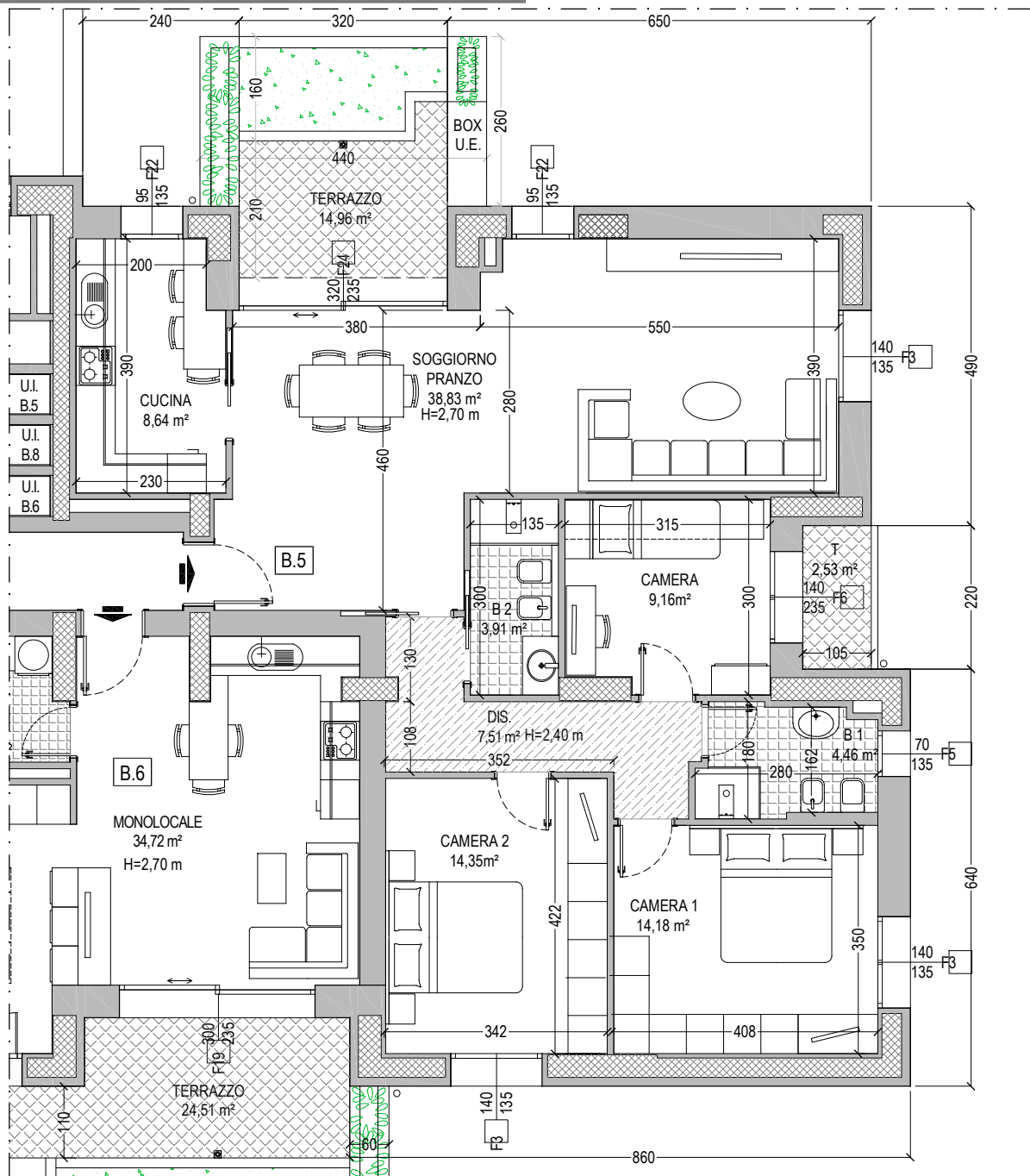


INTERVENTO RESIDENZIALE
RIALE NORD AR.s8 - Comparto C10.1 parte
ZOLA PREDOSA - Via Allende n. 2



APPARTAMENTO 128,20 x 100% = 128,20 mq
 TERRAZZI (14,96 + 2,53) x 50% = 8,75 mq
 SUPERFICIE LORDA COMMERCIALE TOTALE = 136,95 mq

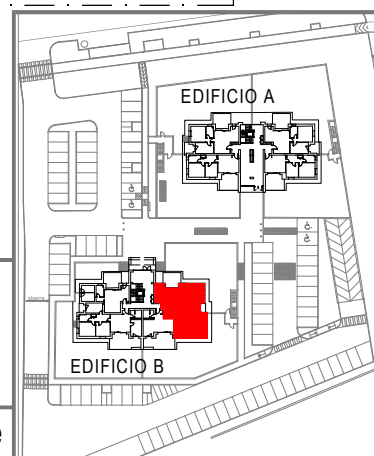
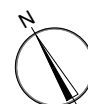


EDIFICIO B

ALLOGGIO B.5

PIANO PRIMO

Scala 1:100



NOTA: le misure sono indicative e possono subire variazioni in cantiere