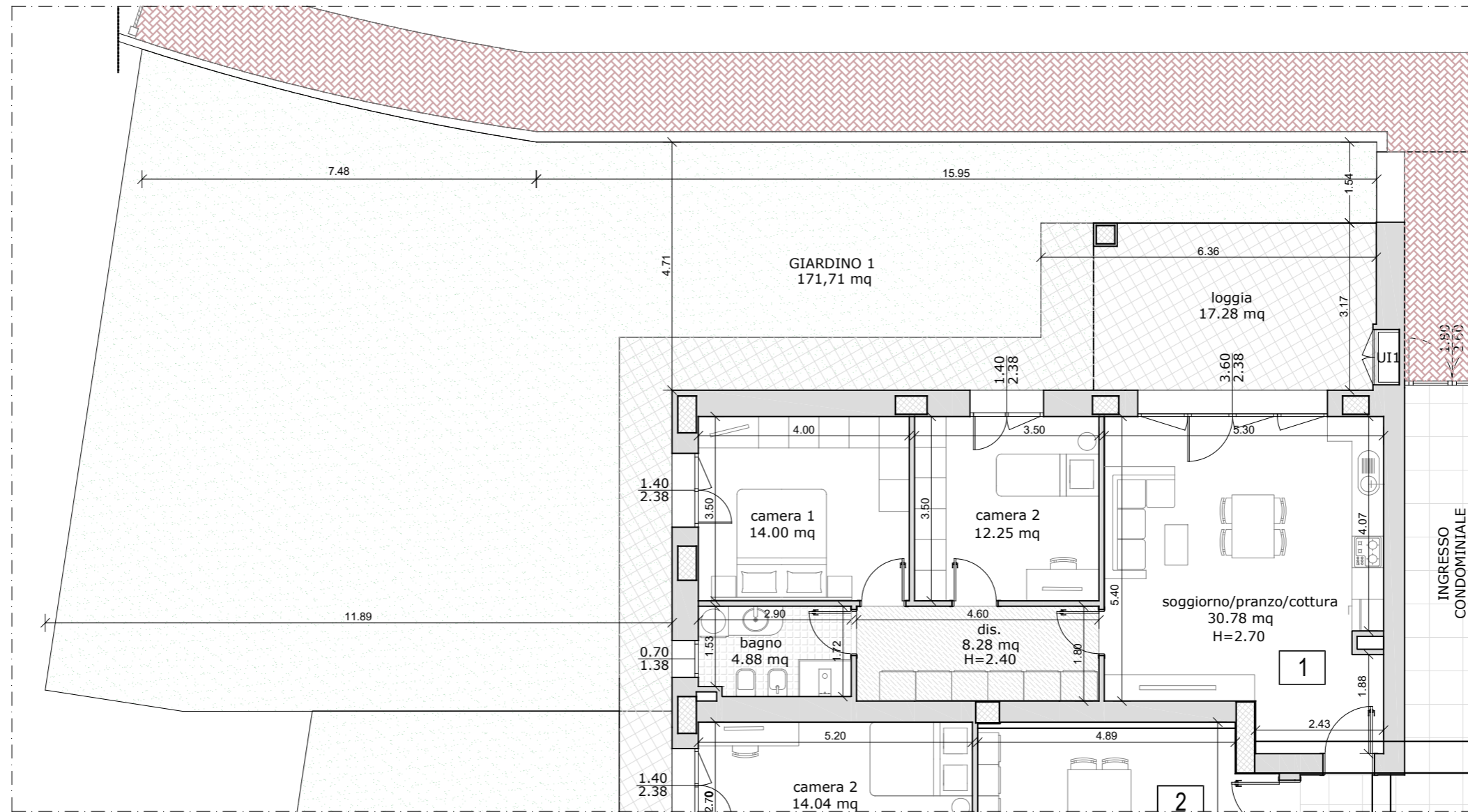


INTERVENTO RESIDENZIALE
 VIA PONTE ALBANO 61
 SASSO MARCONI (BO)

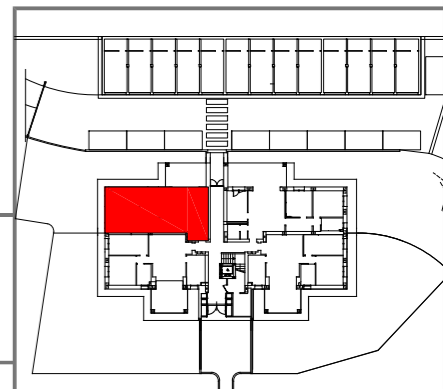
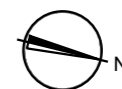
APPARTAMENTO	86,21 x 100% = 86,21 mq
LOGGIA	17,86 x 50% = 8,93 mq
GIARDINO / MARCIAPIEDE	176,59 x 5% = 8,83 mq
SUPERFICIE LORDA COMMERCIALE TOTALE	= 103,97 mq



ALLOGGIO 1

PIANO TERRA

Scala 1:100



NOTA: le misure sono indicative e possono subire variazioni in cantiere