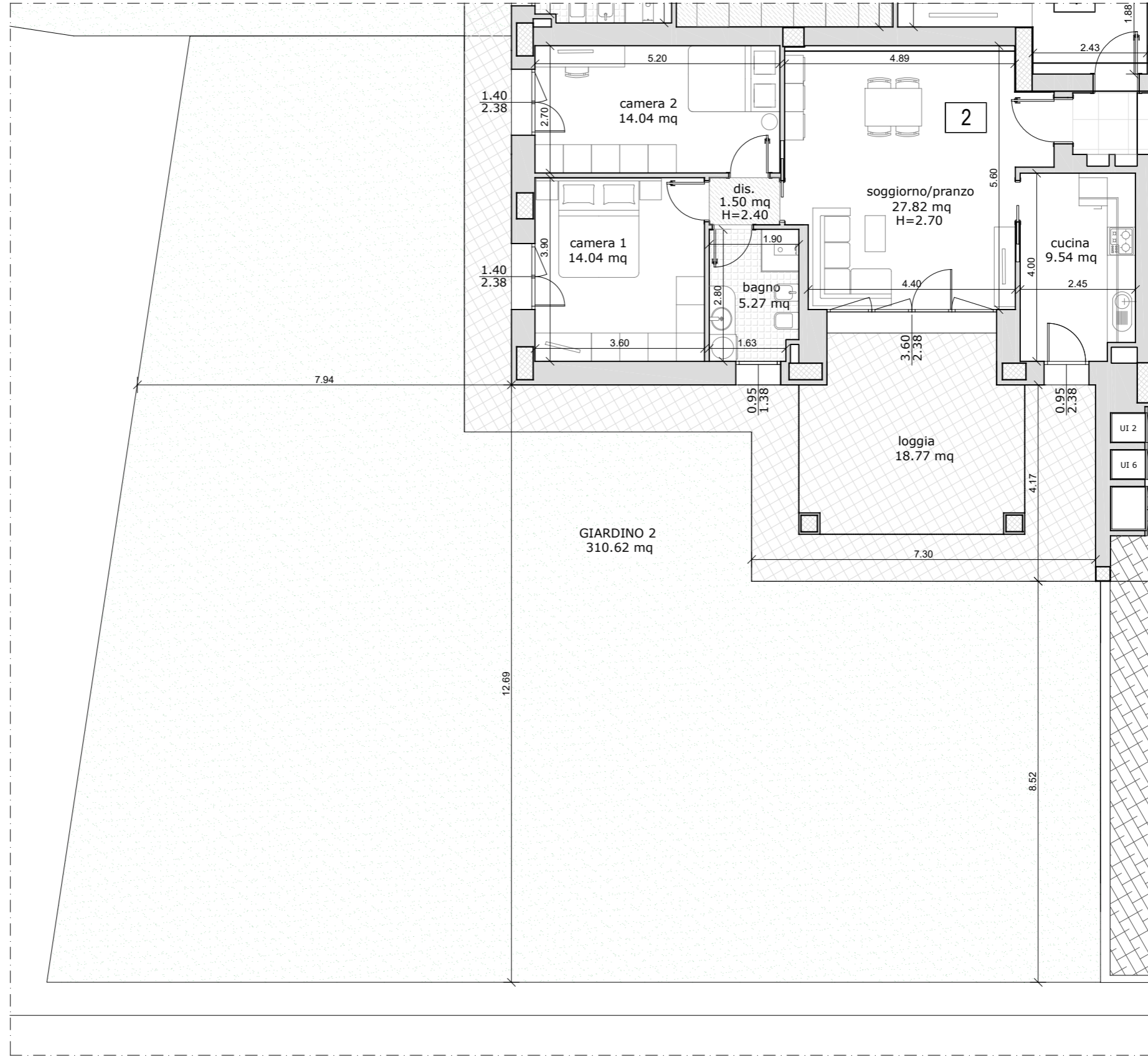


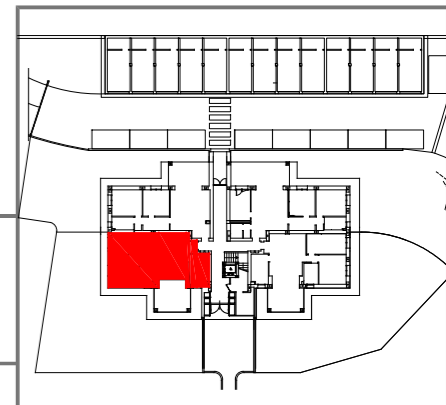
**INTERVENTO RESIDENZIALE**  
**VIA PONTE ALBANO 61**  
**SASSO MARCONI (BO)**

APPARTAMENTO	90,20 x 100% = 90,20 mq
LOGGIA	19,17 x 50% = 9,59 mq
GIARDINO / MARCIAPIEDE	312,80 x 5% = 15,64 mq
<b>SUPERFICIE LORDA COMMERCIALE TOTALE</b>	<b>= 115,43 mq</b>



**ALLOGGIO 2**    **PIANO TERRA**

Scala 1:100



NOTA: le misure sono indicative e possono subire variazioni in cantiere