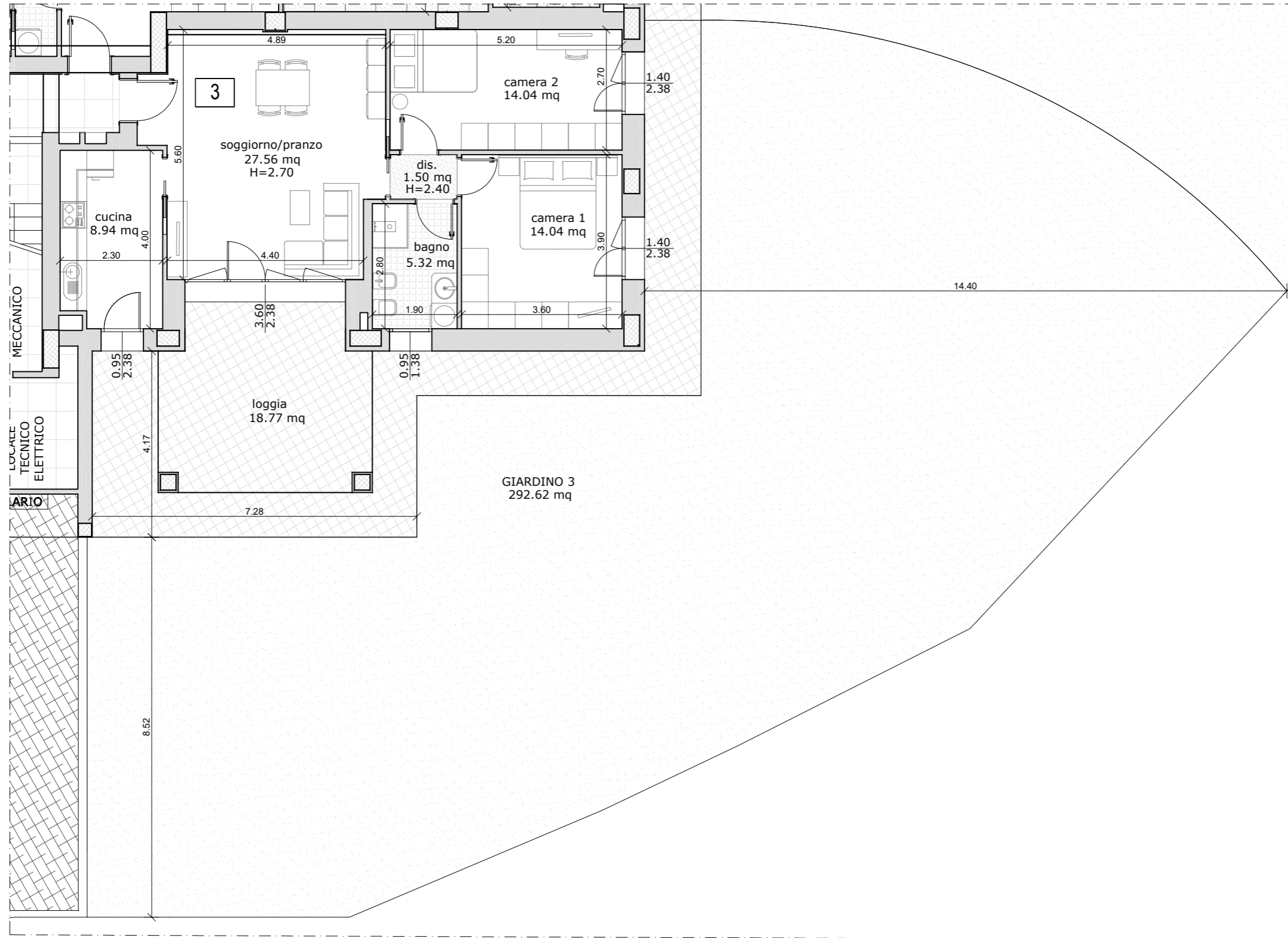


**INTERVENTO RESIDENZIALE**  
**VIA PONTE ALBANO 61**  
**SASSO MARCONI (BO)**

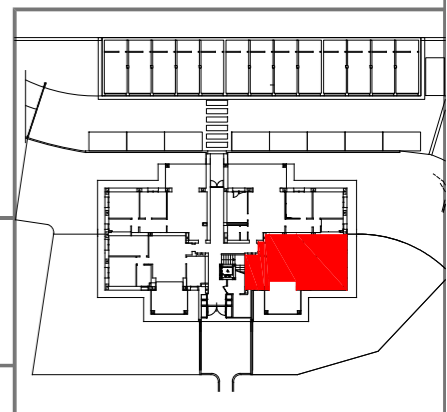
|  |                         |
|--|-------------------------|
| APPARTAMENTO                               | 89,16 x 100% = 89,16 mq |
| LOGGIA                                     | 19,17 x 50% = 9,59 mq   |
| GIARDINO / MARCIAPIEDE                     | 292,74 x 5% = 14,63 mq  |
| <b>SUPERFICIE LORDA COMMERCIALE TOTALE</b> | <b>= 113,38 mq</b>      |



**ALLOGGIO 3**

**PIANO TERRA**

Scala 1:100



NOTA: le misure sono indicative e possono subire variazioni in cantiere