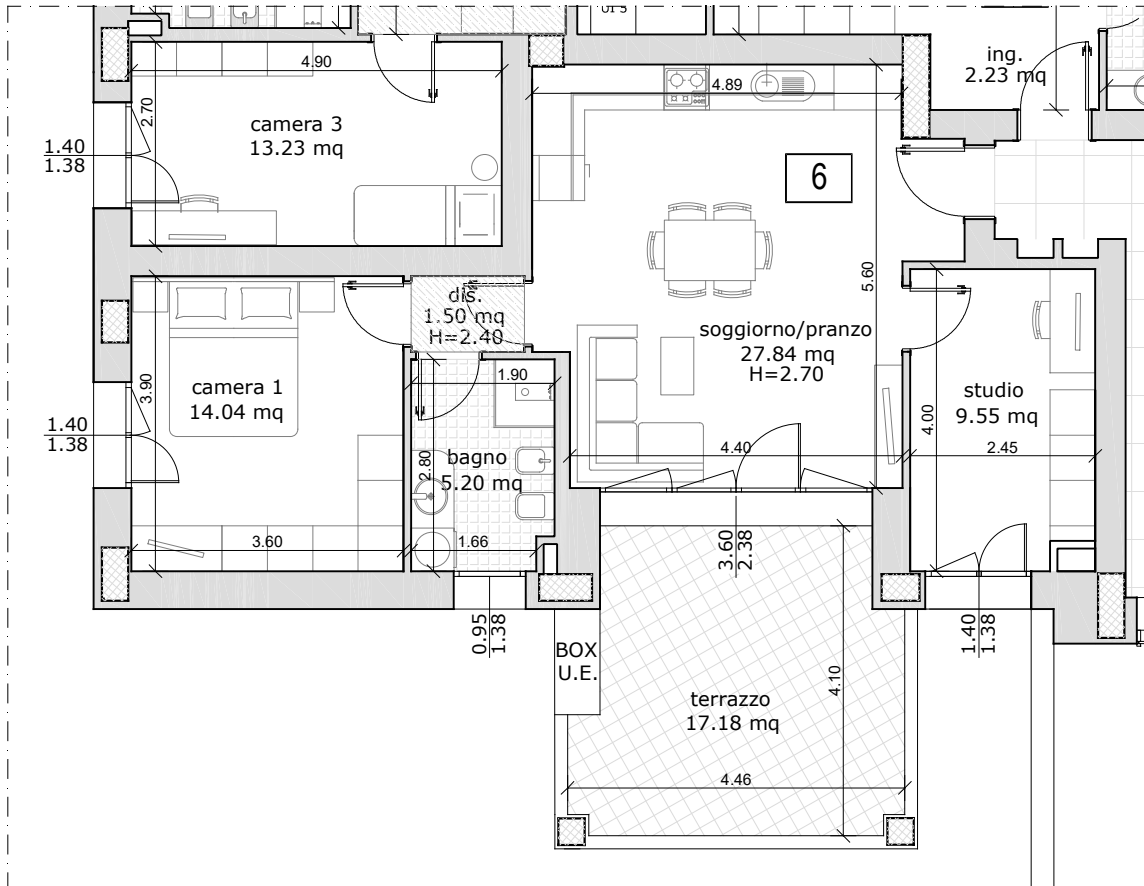


INTERVENTO RESIDENZIALE
VIA PONTE ALBANO 61
SASSO MARCONI (BO)



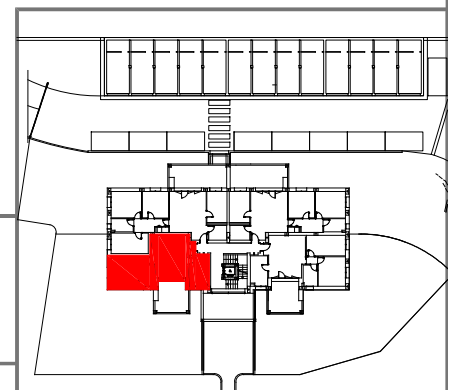
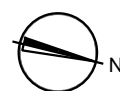
| | |
|-------------------------------------|-------------------------|
| APPARTAMENTO | 74,38 x 100% = 74,38 mq |
| TERRAZZO | 19,17 x 50% = 9,59 mq |
| SUPERFICIE LORDA COMMERCIALE TOTALE | = 83,97 mq |



ALLOGGIO 6

PIANO PRIMO

Scala 1:100



NOTA: le misure sono indicative e possono subire variazioni in cantiere