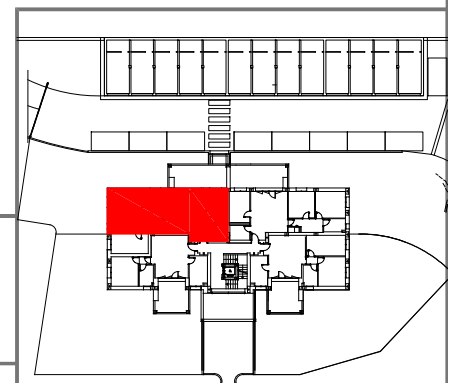
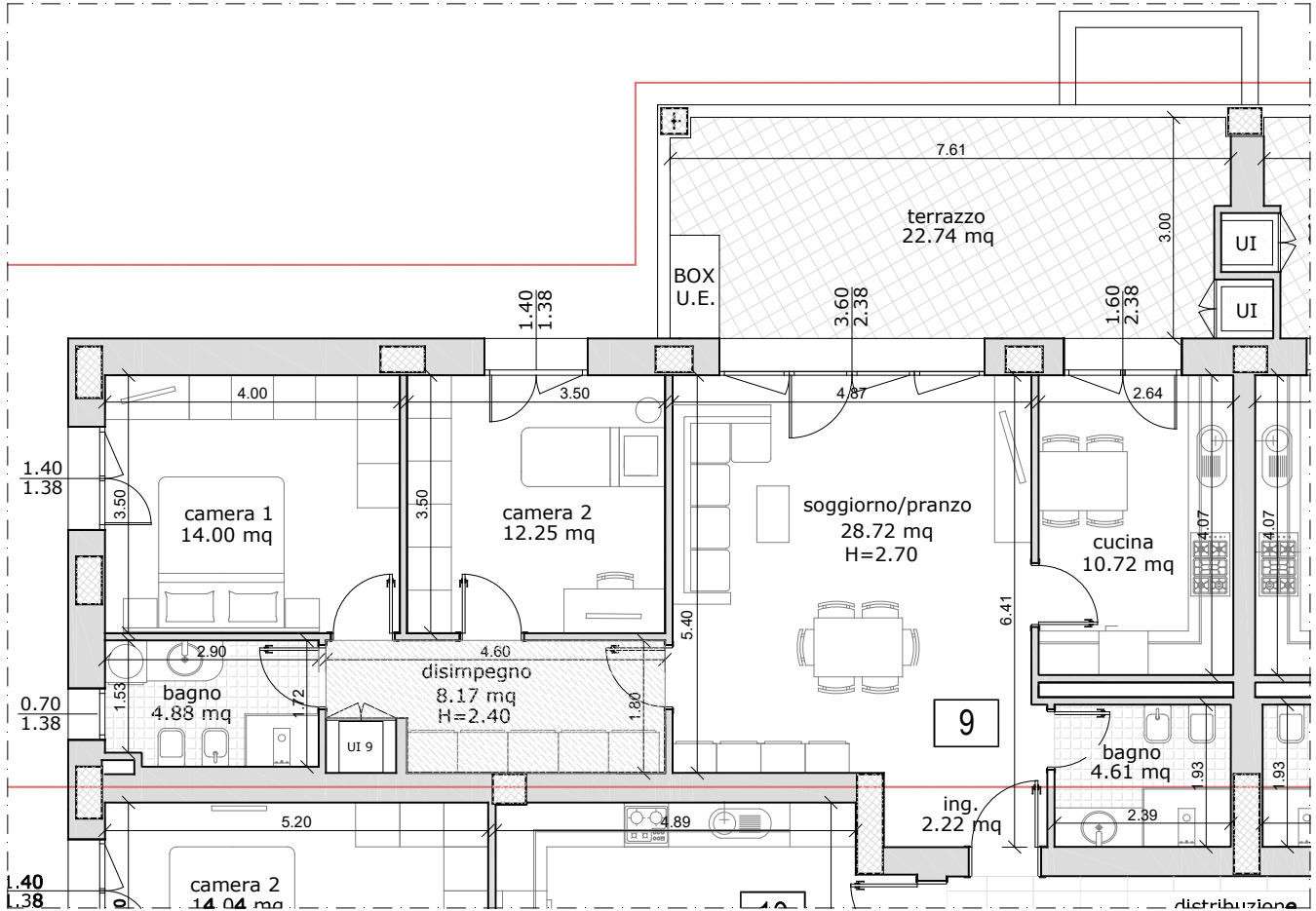


INTERVENTO RESIDENZIALE
VIA PONTE ALBANO 61
SASSO MARCONI (BO)



APPARTAMENTO	102,47 x 100% = 102,47 mq
TERRAZZO	25,36 x 50% = 12,68 mq
SUPERFICIE LORDA COMMERCIALE TOTALE	= 115,15 mq



ALLOGGIO 9

PIANO SECONDO

Scala 1:100



NOTA: le misure sono indicative e possono subire variazioni in cantiere